

Demographic and Socioeconomic Data

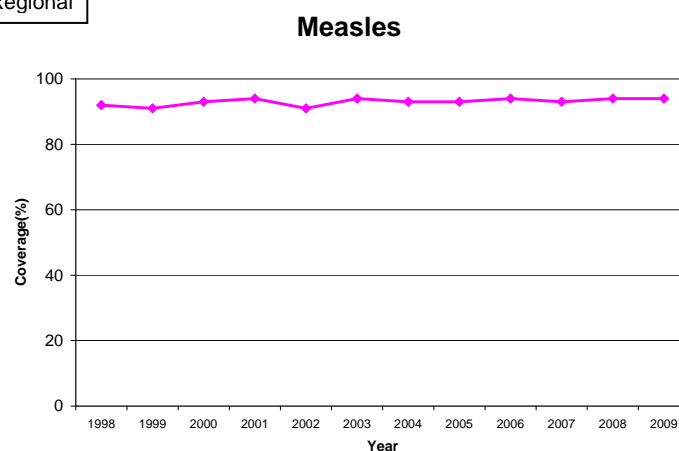
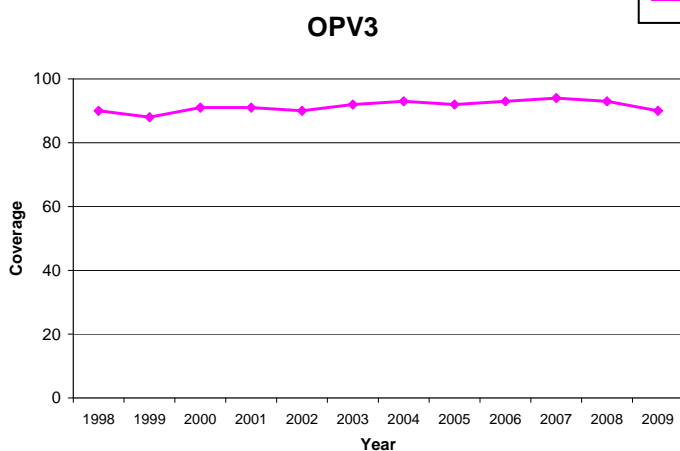
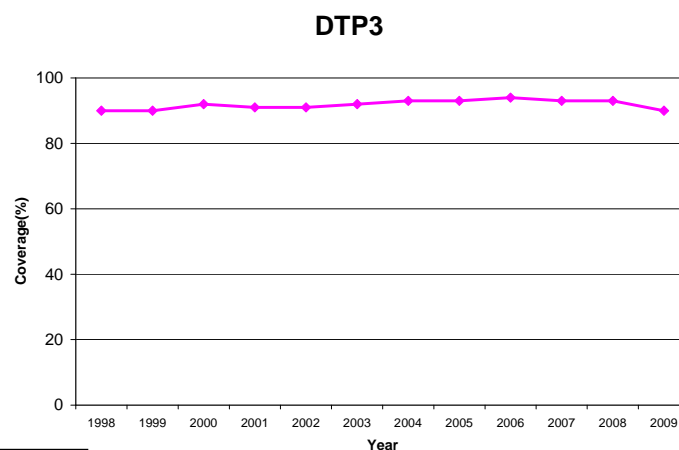
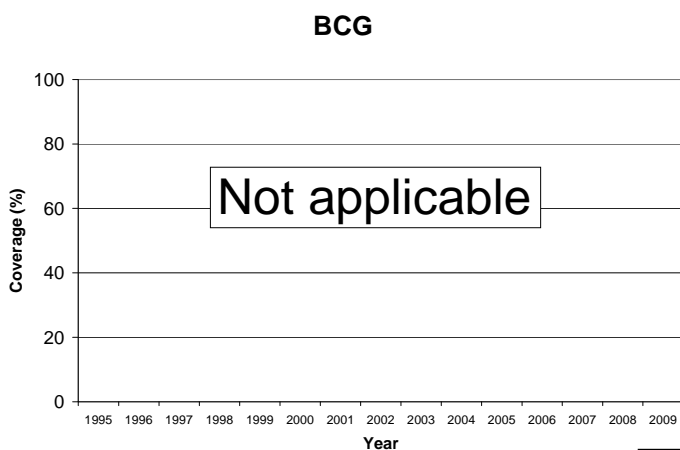
Total population (thousands)
Annual births average (thousands)
Women of childbearing age (thousands)
Gross national income (US\$ per capita)	
Current value
Infant Mortality Rate.
Population below int'l poverty line (%).
National health expenditure as a % of GDP	
Public expenditure (%)
Private expenditure (%)



For more information:

- PAHO country profile:
- WHO Immunization profile:
- GAVI country profile: not applicable

Immunization Coverage, 1995 – 2009



■ Bonaire
■ Total Regional

BCG= bacille de Calmette-Guérin (anti-tuberculosis vaccine); DTP3 = third dose of diphtheria-pertussis-tetanus vaccine (as DPT or combination vaccine); OPV3 = third dose of polio vaccine
MMR = first dose of measles, mumps and rubella vaccine; MMR2 = second dose of measles, mumps and rubella vaccine; Pentavalent = combination vaccine DPT-Hib-HepB

Immunization Schedule, 2009

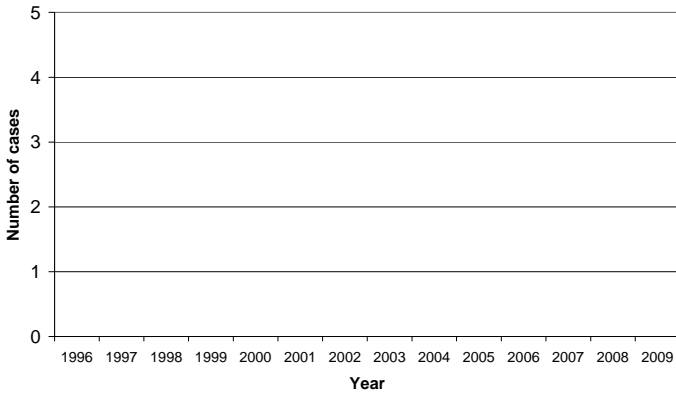
BCG	NA						DT+OPV				4y	9y
DTP+Hib+OPV	2m	3.5m	5m	11m			14m	9y				

NA: not applicable; m-month; y-year;

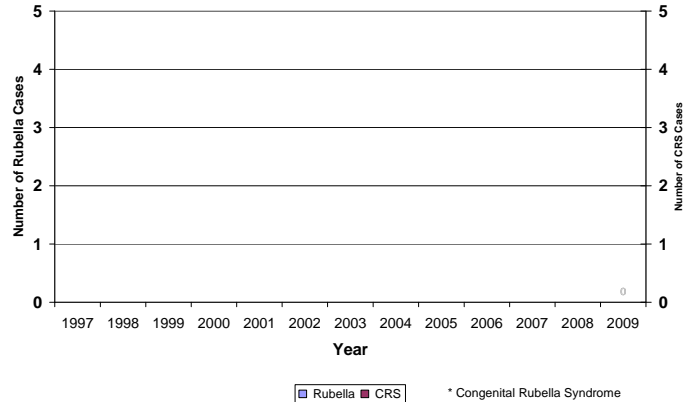


Morbidity Data

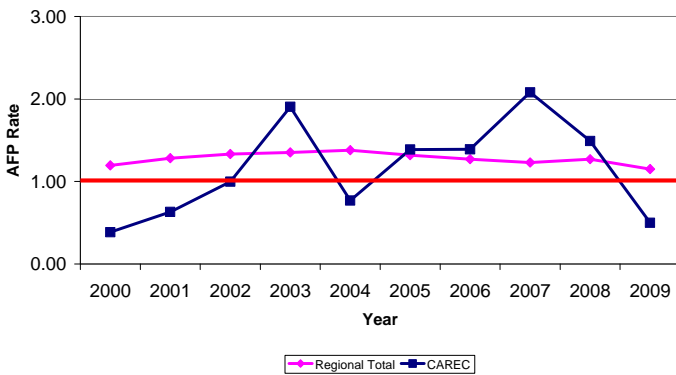
Confirmed Measles Cases, 1996- 2009



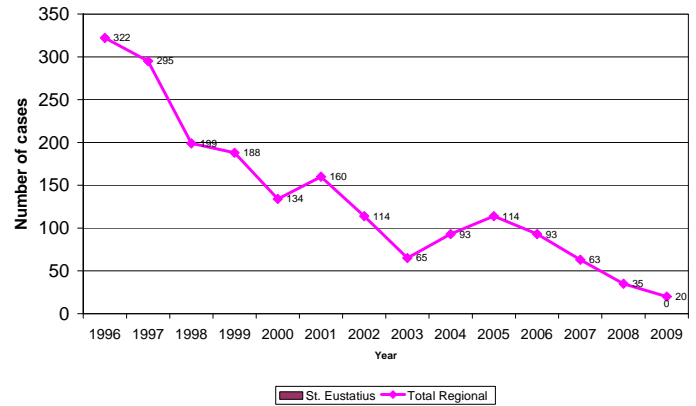
Confirmed Rubella and CRS* Cases, 1997-2009



AFP Rates per 100,000 in children aged <15 years 2000-2009



Confirmed Neonatal Tetanus Cases, 1996-2009



Surveillance Indicators, 2009

Acute Flaccid Paralysis (AFP) - CAREC		Country	Expected
Number of cases	21*		
AFP rate per 100,000 children aged <15 years	0.50		1.0
% of cases investigated <48 hours	90		80
% of cases with 1 sample collected within 14 days of Onset	38		80
% of sites reporting	99		80

Measles/Rubella - CAREC		Country	Expected
Number of suspect cases	393		
% of sites reporting weekly	99		80
% of cases with adequate investigation	68		80
% of cases with adequate sample	97		80
% of samples arriving in lab ≤5 days	33		80
% of results received from lab ≤4 days	94		80
% of cases discarded by lab	96		95

* 10 AFP cases in children <15 years of age for all of CAREC countries.

Source: PESS, MESS, and country reports, FCH-IM, PAHO.

Highlights:

--