

Demographic and Socioeconomic Data

Total population (thousands)(2009)	107
Annual births average (thousands) (2009)	1.9
Women of childbearing age (thousands) (2009)	29
Gross national income (US\$ per capita)	
Current value(2008)	5,880
Infant Mortality Rate (2009)	11.2
Population below int'l poverty line (%)	...
National health expenditure as a % of GDP	
Public expenditure %(2009)	2.9
Private expenditure %(2009)	4.0

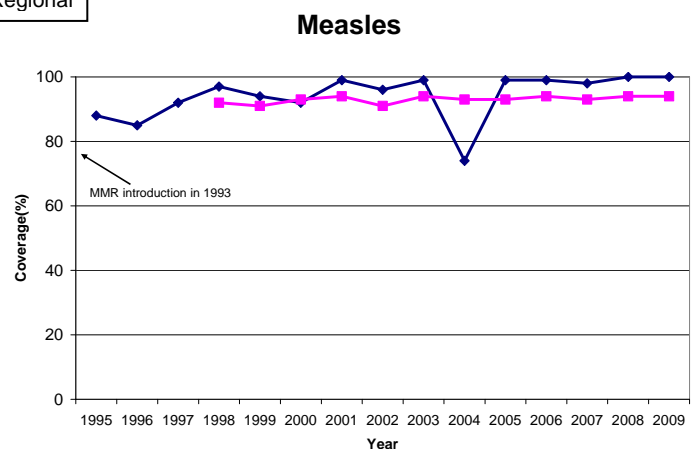
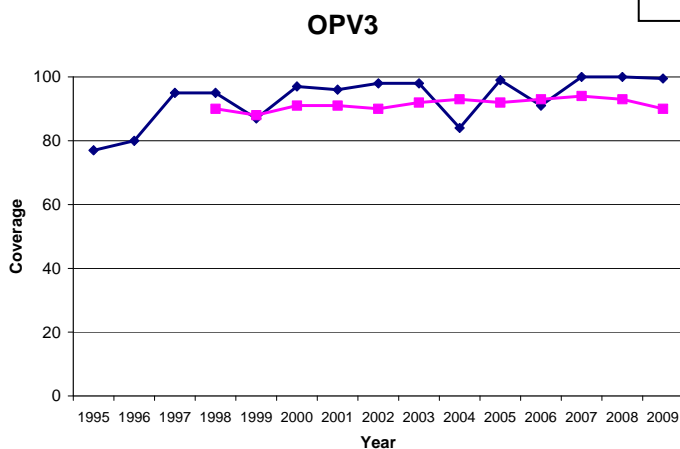
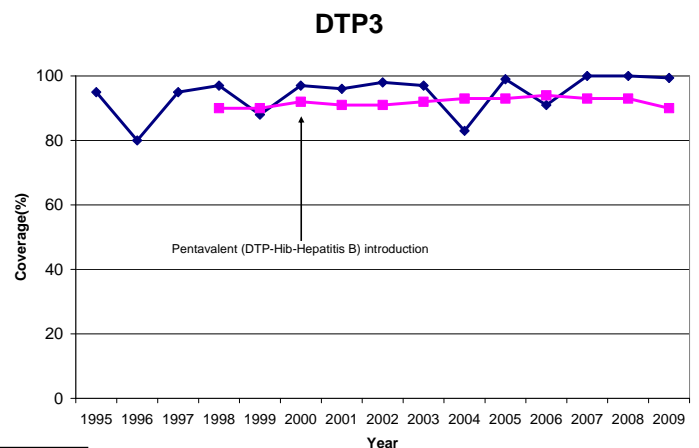
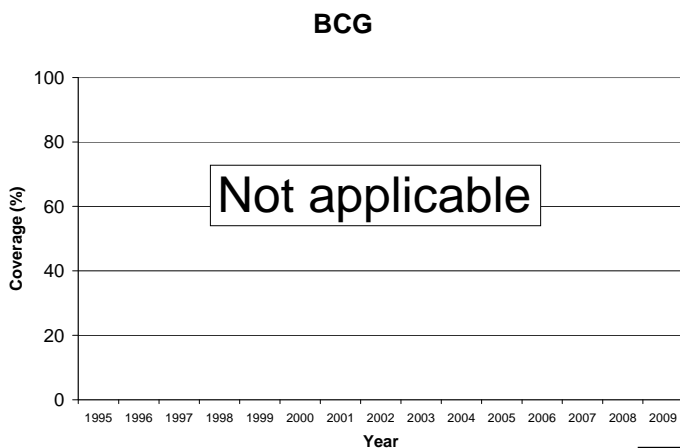
Source: United Nations Population Division ; US Bureau of the Census; The World Bank; and WHO. 2009 or last available year.



For more information:

- PAHO country profile: http://www.paho.org/english/dd/ais/cp_308.htm
- WHO Immunization profile: http://www.who.int/immunization_monitoring/en/globalsummary/countryprofileselect.cfm
- GAVI country profile:

Immunization Coverage, 1995 – 2009



BCG= bacille de Calmette-Guérin (anti-tuberculosis vaccine); DTP3 = third dose of diphtheria-pertussis-tetanus vaccine (as DPT or combination vaccine); OPV3 = third dose of polio vaccine
MMR = first dose of measles, mumps and rubella vaccine; MMR2 = second dose of measles, mumps and rubella vaccine; Pentavalent = combination vaccine DPT-Hib-HepB

Immunization Schedule, 2009

BCG	NA					
OPV	6-8w	16-20w	24-28w	18m	4.5y	14y
DTP				18m		
DT					4y	
DTP-Hib-HepB	6-8w	16-20w	24-28w			

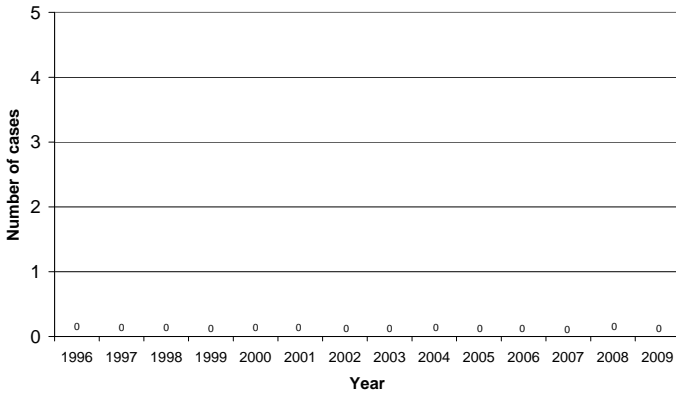
Hepatitis B	3 doses at risk groups; health care workers		
MMR	1y	18m	
TT/Td	7y; pregnant women; adult; older children		
Influenza	Health workers; persons w/ risk factors		

w: week; m-month; y-year

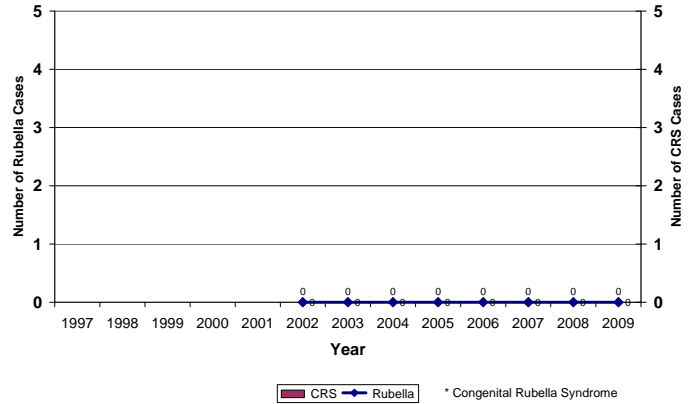


Morbidity Data

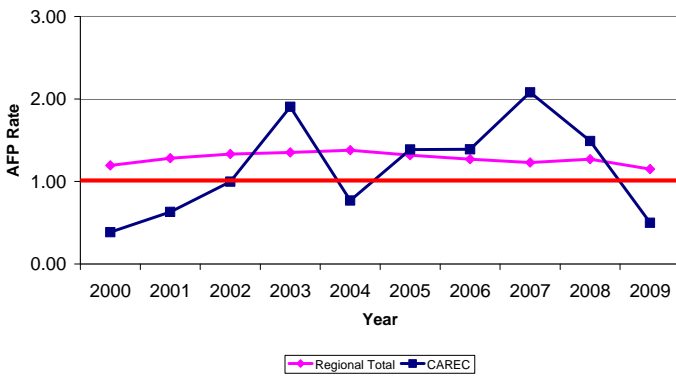
Confirmed Measles Cases, 1996- 2009



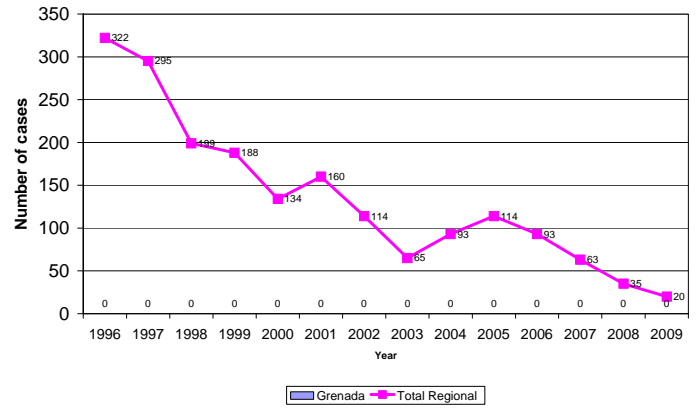
Confirmed Rubella and CRS* Cases, 1997-2009



AFP Rates per 100,000 in children aged <15 years 2000-2009



Confirmed Neonatal Tetanus Cases, 1996-2009



Surveillance Indicators, 2009

Acute Flaccid Paralysis (AFP) - CAREC		
	Country	Expected
Number of cases	21*	
AFP rate per 100,000 children aged <15 years	0.50	1.0
% of cases investigated <48 hours	90	80
% of cases with 1 sample collected within 14 days of Onset	38	80
% of sites reporting	99	80

Measles/Rubella - CAREC		
	Country	Expected
Number of suspect cases	393	
% of sites reporting weekly	99	80
% of cases with adequate investigation	68	80
% of cases with adequate sample	97	80
% of samples arriving in lab ≤5 days	33	80
% of results received from lab ≤4 days	94	80
% of cases discarded by lab	96	95

* 10 AFP cases in children <15 years of age for all of CAREC countries.

Source: PESS, MESS, and country reports, FCH-IM, PAHO.

Highlights: